

# INDUCTIVE PROXIMITY SWITCHES

209.02en

## DESCRIPTION AND APPLICATION



Inductive proximity switches are used for the monitoring of the presence of metal objects. They function as contact less substitution for the mechanical limit switches. Depending on a switch mode (normally open / normally closed), the output closes or opens, when the conductive objects approaching the active switching zone.

### Operation

Operation of the sensor is maintenance-free. For a fault free operation it is however necessary to keep the following principles: surfaces of the active switching zone have to be kept free, clean. It is necessary to prevent sediments and other foreign particles from touching and setting up the active surface of the sensor, especially when mounted in upright position (active surface upwards). High electromagnetic field intensity devices (e.g. radiophone) must not be used in the immediate vicinity of the sensor.

### Connection of the switch

Inductive proximity switches are delivered with 2 x 0.25 mm<sup>2</sup>, 3 x 0.25 mm<sup>2</sup> or 4 x 0.25 mm<sup>2</sup> PVC cable in length of 2 m. This type meets ingress protection IP 68. variant of inductive proximity sensor with connector meets ingress protection IP 67.

Flush sensor with cable



Flush sensor with connector



Non-flush sensor with cable



Non-flush sensor with connector



Sensor	Flush	Variants
	with cable / with connector	
	Diameter 6,5 mm	series PDI 3wires series PSI 3wires

Sensor	Non-flush	Variants
	with cable / with connector	
	Diameter 6,5 mm	series PDI 3wires series PSI 3wires

Flush sensor with cable



Flush sensor with connector



Non-flush sensor with cable



Non-flush sensor with connector



Sensor	Flush	Variants
	with cable / with connector	
	Diameter 6,5 mm	series PDI 3wires series PSI 3wires

Sensor	Non-flush	Variants
	with cable / with connector	
	Diameter 6,5 mm	series PDI 3wires series PSI 3wires

Flush sensor with cable



Flush sensor with connector



Non-flush sensor with cable



Non-flush sensor with connector



Sensor	Flush	Variants
	with cable / with connector	
	Thread M 12	series PSI 2wires series PDI 3wires series PSI 3wires series PDI 4wires series PSI 4wires

Sensor	Non-flush	Variants
	with cable / with connector	
	Thread M 12	series PSI 2wires series PDI 3wires series PSI 3wires series PDI 4wires series PSI 4wires

Flush sensor with cable



Flush sensor with connector



Non-flush sensor with cable



Non-flush sensor with connector



Sensor	Flush with cable / with connector	Variants
	Thread M 18	series PSI 2wires series PDI 3wires series PSI 3wires series PDI 4wires series PSI 4wires

Sensor	Non-flush with cable / with connector	Variants
	Thread M 18	series PSI 2wires series PDI 3wires series PSI 3wires series PDI 4wires series PSI 4wires

Flush sensor with cable



Flush sensor with connector



Non-flush sensor with cable



Non-flush sensor with connector

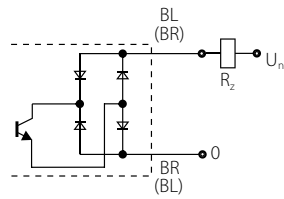


Sensor	Flush with cable / with connector	Variants
	Thread M 30	series PSI 2wires series PDI 3wires series PSI 3wires series PDI 4wires series PSI 4wires

Sensor	Non-flush with cable / with connector	Variants
	Thread M 30	series PSI 2wires series PDI 3wires series PSI 3wires series PDI 4wires series PSI 4wires

## DIMENSIONAL DRAFT

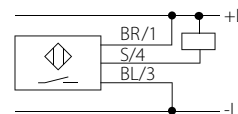
2wires



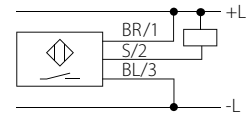
BR - brown, BL - blue

3wires

with cable / NPN n.o.

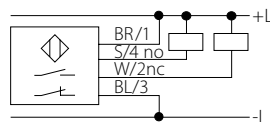


with cable / NPN n.c.

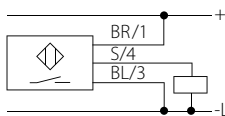


4wires

with cable  
NPN n.o. / NPN n.c.

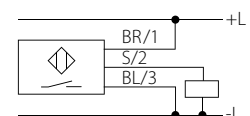


with cable / PNP n.o.

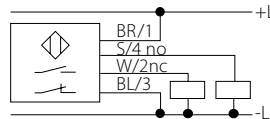


BR - brown / BL - blue

with cable / PNP n.c.

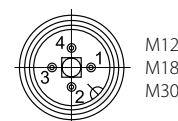


with cable  
NPN n.o. / NPN n.c.



BR - brown / S - black / W - white BL - blue

4wires with connector



3wires with connectors konektorem

