

# Disposable Temperature Recorder Elitech RC-17/ RC-17N

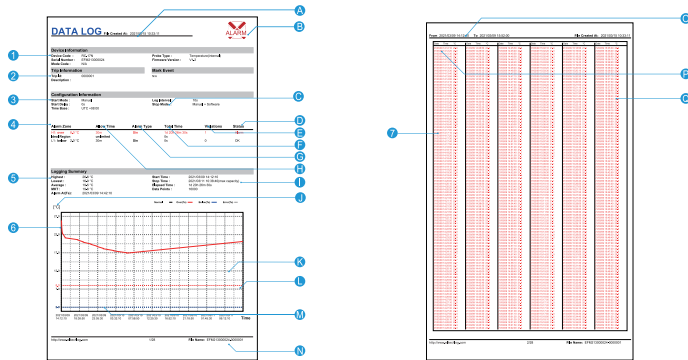


## Status Indication

The status of the recording can be analyzed by the unit's indicator light.

Status	Indicator Light
Does not Start	Red and green light flash simultaneously
Start-up Delay	Red and green light blinks alternately once
Start - Normal	Green light blinks once ( flashes 10 times every second)
Start - Alarm	Red light flashes once ( flashes 10 times every second)
Start - Mark	Red and green light flash 3 times at the same time
Start - Mark overrun	Red and green light flash 3 times alternately
Stop - Normal	Green light flashes twice
Stop - Alarm	Red light flashes twice

## Content of Report



<b>1</b> Basic product information	<b>C</b> Set stop method	<b>K</b> Alarm threshold line (corresponding to item L)
<b>2</b> Descriptions (customizable)	<b>D</b> Alarm status of D alarm section	<b>L</b> Alarm threshold
<b>3</b> Configuration information	<b>E</b> Total number exceeds the alarm threshold temperature	<b>M</b> Record data curve Note: ultra-high temperature is red, ultra-low temperature is blue, others are black
<b>4</b> Alarm threshold and related statistics	<b>F</b> The total length of time that the F temperature exceeds the alarm threshold	<b>N</b> File name (serial number + purpose description ID)
<b>5</b> Statistics	<b>G</b> Alarm delay and alarm type	<b>O</b> Recording time range in the current page
<b>6</b> Temperature data graph	<b>H</b> Alarm threshold and alarm interval division	<b>P</b> Record when P date changes (date + temperature)
<b>7</b> Temperature data details	<b>I</b> Stop time (actual stop method)	<b>Q</b> Record when Q date has not changed
<b>A</b> File creation time (stop recording time)	<b>J</b> Data curve graph ordinate unit	
<b>B</b> Alarm indication (the content of the picture shows the alarm state)		

RC-17/17N



**Elitech**  
Innovation Preceding All

Attach RC-17/17N

**HERE**

**CAUTION**  
TEMPERATURE MONITORING

SHIPPER \_\_\_\_\_

CONTAINER NO. \_\_\_\_\_

TRUCK NO. \_\_\_\_\_

REF NO. \_\_\_\_\_

CONTENTS \_\_\_\_\_

LOGGER SERIAL NO. \_\_\_\_\_

START TIME \_\_\_\_\_

DEPARTURE PORT \_\_\_\_\_

ARRIVAL PORT \_\_\_\_\_

Alarm threshold \_\_\_\_\_ °C □ °F

LOG CYCLE \_\_\_\_\_

LOG INTERVAL \_\_\_\_\_

START DELAY \_\_\_\_\_

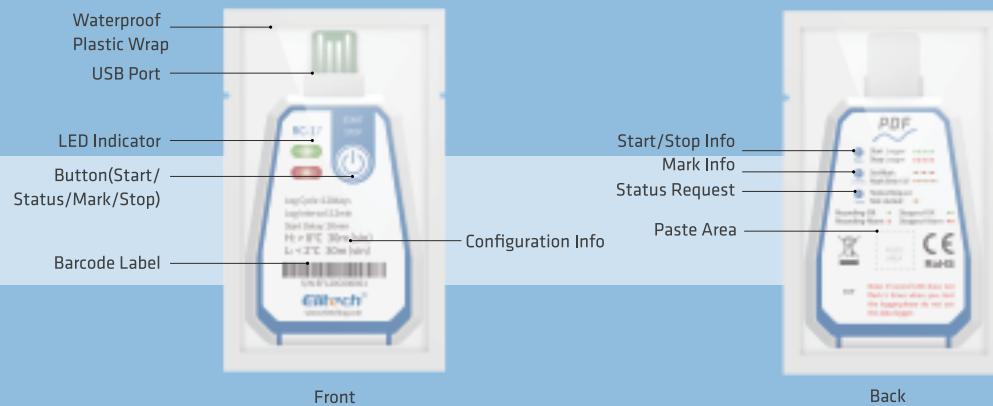
# Disposable Temperature Recorder

## Elitech RC-17/ RC-17N



**Elitech**<sup>®</sup>  
Innovation Preceding All

### Instruction



\*Please note that all pictures showed above are for illustration purposes only and actual products may vary due to product enhancement or change.

### Description

Elitech RC-17 is mainly used for temperature monitoring and logging in the transportation and storage of medical and edibles on reefer trucks, bags, or containers.

The unit has a built-in temperature probe and is powered by a CR2450 lithium battery. Additionally, the RC-17 is also waterproof (IP67) and after connected to a computer, it can directly export a PDF report data via Elitech software.

### Technical Parameters

The parameters of the RC-17 are set by default; parameters can be customized according with user's needs.

<b>Measuring temperature</b>	-30°C~-70°C/-22°F~158°F	<b>Data interface</b>	USB2.0/NFC
<b>Storage temperature</b>	-30°C~-70°C/-22°F~158°F	<b>Report type</b>	PDF format data report
<b>Temperature measurement accuracy</b>	±0.5°C/±0.9°F (-20°C~40°C/-4°F~104°F) ; 1°C/1.8°F (other)	<b>Power supply</b>	Built-in CR2450 wide temperature lithium battery
<b>Sensor</b>	Built-in NTC	<b>Battery life</b>	2 years of storage and use in normal temperature environment
<b>Recording</b>	capacity of 16000 groups (maximum)	<b>Protection grade</b>	IP67
<b>Recording period</b>	6, 15, 30, 60, 90, 120, 180 days (customizable)	<b>Dimensions</b>	93*58*8mm (length * section * height)
<b>Alarm type</b>	single type ( Sin ), cumulative type ( Cum )	<b>Weight</b>	about 20g
<b>Alarm threshold</b>	Factory default (customizable)		

ⓘ Note: It is recommended to place the RC-17 in a room temperature before initiating the recording.

**Attention!** Maximum 16000 Points: The actual temperature recording capacity may vary due to the recording cycle.

**Start Delay:** The data logger will start logging after the set delay timing.

**Alarm Threshold:** The alarm interval can be set according to the threshold. One upper and low temperature limit setting available.

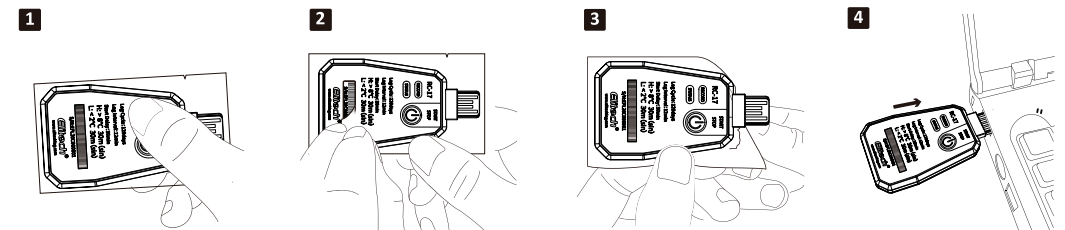
H	Temperature value over H means over-temperature alarm
L	Temperature value under L means low-temperature alarm

**Alarm type :**

Single	The data logger will alarm once in case of over-temperature events
Cumulative	The data logger will alarm multiple times in case of over-temperature event

**Alarm Delay:** When the temperature enters the over-temperature alarm zone. The alarm will only go off after the time set for alarm delay has passed.

### Quick Start Guide



1. Press the start button for 5 seconds to start logging. The green light flashes 5 times.

2. Tear off the barcode for backup.

3. Press the stop button for 5 seconds to stop logging. The red light flashes 5 times. Take the temperature recorder out of the waterproof bag.

4. Plug the device into the computer with USB port to view the PDF data report.


### NFC OPERATION INSTRUCTIONS (ONLY RC-17N)

1. Install and log in to the APP


Use the mobile browser to scan the QR code or download and install the 'Elitech iCold' through the mobile application center; open the APP and follow the prompt instructions to register for a new account.

2. Parameter setting

Click the navigation button in the upper left corner of the APP , select the NFC temperature label, and then approach the device to view the data (enable the NFC function of the mobile phone).

Click the  in the upper right corner to set the parameters. After the setting is completed, the mobile phone should be close to the data logger and click the 'OK' button to save the parameters (the parameters are only allowed to be set when the device is not recording).

3. View and export data

When the phone is near the device, reading device data, click on the upper right corner  to select the desired report format to export data report.

